

# NCR iTRAN 3000t

Need a low volume image-based transport  
that offers full functionality?

YES

## The tabletop transport that offers lower cost with full function

This feature-rich tabletop product is designed in a modular, compact configuration to optimize footprint while maximizing performance. End to end, this iTRAN transport has been designed to maximize document throughput and operator productivity (made possible by NCR's WiselP application interface). The many productivity-enhancing features of the NCR iTRAN 3000t mean lower labor costs for you. This product is designed to be adaptable to the changing and demanding market requirements.

- **Ultimate flexibility to scale up or scale down your operations**

This is an excellent choice for small, medium or large financial institutions, government agencies and insurance companies that process up to 10,000 items per day. NCR iTRAN 3000t is rated at 200dpm\* while performing image capture and intelligent pocketing decisions.

- **Minimize rejects and misreads**

The read-rate is optimized through advanced image technology that intelligently combines the authenticity of magnetic reading with image-based OCR. It gets more right the first time.

- **Long-term reliability keeps downtime to a minimum**

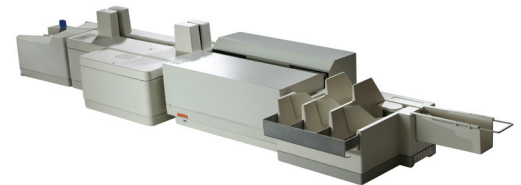
NCR has a proven track record for creating durable hardware that operates reliably, hour after hour, day after day. This gives you the peace of mind to make the most of every feature from day one.

- **Lets you perform color imaging**

By utilizing advanced digital camera technology, the transport offers dependable, high-quality color image capture, while still providing the flexibility of binary or grayscale image capture.

- **Easy maintenance and increased productivity**

We know that even short periods of downtime can result in significant loss of revenue. To avoid this, NCR iTRAN 3000t uses the latest mechanical design and advanced technologies to keep the transport up and running.



For more information, visit [www.ncr.com](http://www.ncr.com),  
or email [financial@ncr.com](mailto:financial@ncr.com).

\*Performance may vary. Based on 6" documents.

## Key Features

- Autofeed hopper with 500 document capacity and double-feed detect
- Front and rear image cameras
- Color scan imaging (optional)
- Single-line rear ink jet
- Full field encoding capability
- Versatile pocket configuration

## Why NCR?

With over 125 years of experience and knowledge, NCR is the leading global provider of payments, assisted- and self-service solutions. NCR has been the global number one manufacturer of ATMs for more than 22 consecutive years. We help our clients around the world improve their customer interactions, implement change quickly and proactively, and transform their businesses to become leaders and change agents. We can help you, too.

## Technical Specifications

### PRODUCT DIMENSIONS

#### HEIGHT

• Feeder, scanner, endorser, encoder, pockets	7.9"	(200mm)
• Auto-feed hopper	6.0"	(152mm)
• Base scanner unit	7.9"	(200mm)
• Pockets (3)	4.5"	(115mm)
• Reject pocket	2.4"	(60mm)
• Encoder	6.54"	(166mm)

#### LENGTH

• Feeder, scanner, endorser, encoder, pockets	56.61"	(1,438mm)
• Auto-feed hopper	9.3"	(237mm)
• Base scanner unit	17.2"	(436mm)
• Pockets (3)	9.8"	(250mm)
• Reject pocket	6.3-9.8"	(160-250mm)
• Encoder	14.0"	(356mm)

#### DEPTH

• Feeder, scanner, endorser, encoder, pockets	13.0"	(330mm)
• Auto-feed hopper	6.3"	(161mm)
• Base scanner unit	10.4"	(265mm)
• Pockets (3)	8.5"	(216mm)
• Reject pocket	2.4"	(60mm)
• Encoder	10.0"	(254mm)

#### WEIGHT

• Feeder, scanner, endorser, encoder, pockets	56.6lbs	(25.7kg)
• Auto-feed hopper	6.6lbs	(3kg)

• Base scanner unit	23.1lbs	(10.5kg)
• Pockets (3)	9.9lbs	(4.5kg)
• Encoder	17lbs	(7.7kg)

#### DOCUMENT DIMENSIONS

- The transports are capable of handling documents that meet the following criteria:
- Height – min: 2.36" (60mm), max 4.25" (108mm)
- Length – min 5.12" (130mm), max 8.5" (216mm)
- Thickness – min .0027" (.07mm), max .0047" (.12mm)
- Weight – min 16lbs (70g/m<sup>2</sup>), max 32lbs (120g/m<sup>2</sup>)

#### AUTO-FEED HOPPER

- 500 document capacity, double feed detect

#### POCKETS

- Standard configuration is 3 pockets (+1 reject pocket)
- Pocket capacity is 250 documents
- Additional pockets in increments of 3, up to a total of 9 pockets (+1 reject pocket)

#### BASE UNIT

- Front and rear image cameras, 16 or 256 gray scale at 100 or 200dpi, color scan imaging (optional)

#### ENCODE AND STAMP

- Up to 70dpm amount field encode
- Full field encoding capability
- Front and rear endorsement stamp included
- CMC7 or E13B fonts supported and OCR A, OCR B

#### READER

- MICR CMC7 and E13B

#### INK JET

- Single-line rear ink jet

#### MAXIMUM SPEED\*

- Capture, endorse and sort – 200dpm
- Capture, encode and sort – 70dpm

#### HOST CONNECTION

- USB 2.0

#### API SUPPORTED

- NCR WiselP

#### MINIMUM PC CONTROLLER

- Windows® 2000 or XP operating system
- 3", 1.44MB flex drive
- Pentium® 4, 1.0GHz processor or better
- Universal Serial Bus interface (2.0) with multiple ports
- 512MB RAM
- XGA resolution display
- 10GB hard disk capacity
- Keyboard and mouse
- CD-ROM drive or DVD drive
- 100BASE-T Ethernet LAN interface

#### POWER REQUIREMENTS

- Base system: 100-240 VAC Auto-adjusting 50-60Hz, 150 Watts
- Encoder: 100-240 VAC Auto-adjusting 50-60Hz, 75 Watts

\* Performance may vary depending on application optimization. Ratings are based on processing 6" documents.

NCR ITRAN 3000t



Experience a new world of interaction

**imagex**

Phone: 703-883-2500  
Fax: 571-203-8976  
www.imagexinc.com

1985 Isaac Newton Square W., Reston, VA 20190

NCR continually improves products as new technologies and components become available. NCR, therefore, reserves the right to change specifications without prior notice.

All features, functions and operations described herein may not be marketed by NCR in all parts of the world. Consult your NCR representative or NCR office for the latest information.

All brand and product names appearing in this document are trademarks, registered trademarks or service marks of their respective holders.